

Grand Pailley Bas

Rural Gite in South West France

Information Pack



LOCATION AND INFORMATION.

The address of the house is Grand Pailley Bas, 47350, Cambes, Lot-et-Garonne.

Telephone: France: (0033) (0)6 04 41 50 60

UK Landline: (rings in France) 023 8001 0873

UK Mobile: 07860 756029

Sat Nav co-ordinates: N 44°35.911 E 0°16.902

DIRECTIONS FROM BERGERAC (see map attached)

From Bergerac, head to Eymet and then south towards Miramont-de-Guyenne. After a few kilometres you will see a signpost for Sauvetat du Dropt. This is a right turn, and there is a large night club on the corner called La Feria - take it. You are actually travelling now in the direction of Duras. Go through Sauvetat and continue straight on (do not turn right towards St Jean). This will take you after about 4 kilometres to Allemans du Dropt.

On the approach to Allemans you will pass through Moustier. You will see a sign indicating Allemans to your left. Turn here and after a few hundred yards, bear right into Allemans. There is a small football stadium on your right at the fork. Pass over the attractive weir and cross a bridge into Allemans. You will come to a T junction turn right and second left (very sharp corner) past the church and then past a bar on your left, the market square is on your right. Go straight ahead and you will see the sign to Cambes and Seyches. Keep following this road for just over 2 miles and you will come to the village of Cambes. It is small, and as you go through you will see the church on your left. About 100 yards past the church is a large house on the right with grey shutters. Just past this, also on the right you will see a turning to the right with a recycling point on the corner. Turn right here, the sign says Grand Pailley (Bas) and head down the hill. At the bottom of the hill there is a turning to the right, a sign in front of you saying Grand Pailley and an old farmhouse on the right. Turn right here and go to the end of the lane where we are on the left.

NB. If you require to do any shopping on route, there is a Carrefour Market on your left just as you approach Eymet. For further details on shopping in the area, please the shopping section below.





DIRECTIONS FROM BORDEAUX

From Bordeaux follow road signs to “TOULOUSE” A62 autoroute.

Exit the autoroute at Junction 5 and take the D933 towards MARMANDE.

As you enter MARMANDE you will cross over the river bridge, Continue straight on through the first two sets of traffic lights.

Continue on this road, go past the railway station on your left...**(be aware that there is a speed camera on the central reservation of this stretch of road 50kph max.)** at the next set of lights, turn left towards MIRAMONT D933

Continue on the D933 until you reach the village of SEYCHES.

There is a large chemist that stands back from the road on your left as you enter the village, turn next left past this building onto the D228 signed Centre Ville and LEVIGNAC.

Follow this road through the archway and continue on until you reach the next main road junction with the D132.

Turn left onto the D132 then after just 50 metres turn/fork right onto the D228 signed ALLEMANS du Dropt..

Continue on the D228 for 2 km then turn right onto the D309 signed CAMBES / ALLEMANS du Dropt.

Continue on this road to the village of CAMBES. As you approach the village. slow down because as soon as you see the village name sign on your right you need to turn left at this small crossroads, and head down the hill.

If you get to the church, you have missed the turning and gone too far!

At the bottom of the hill there is a turning to the right, a sign in front of you saying Grand Pailley and an old farmhouse on the right. Turn right here and go to the end of the lane where we are on the left.

Any problems call us. Best number to use is UK mobile 07860 756029.

What we provide

Welcome pack

We will supply you with a welcome pack containing a bottle of red and white local Duras wine, fresh milk, sliced bread, tea and instant coffee. There is a Senseo coffee machine in the kitchen, which has a starter pack of ground coffee pods.

Toiletries / Cleaning Materials

We will supply you with enough washing machine detergent, softener, dishwasher tablets, rubbish sacks and cleaning materials for your stay. We will also supply you with enough shower gel, liquid soap and toilet rolls to get you through the first few days. Please note that our waste water system is reliant on a correctly functioning septic tank (fosse septique) and we ask that when purchasing additional toilet rolls etc, please check that they are fosse friendly – usually marked ‘compatible fosse septique’ or ‘sans danger pour fosse septique’.

On no account should bleach be used, as this kills our friendly bacteria that munches through what ends up in the tank!! Please also do not put cooking oil or fat down the sink, please put it in the jar provided.

Bedroom Extras

Each bedroom has a hairdryer, fan and a 4 socket English to French adapter for charging phones etc.

Towels

1 bath towel per guest, 1 hand towel and kitchen towels.

Please do not use the bath towels for the poolside.

Bed linen

Egyptian cotton bed linen will be provided.

Gas bottles

We provide gas bottles for the cooker and BBQ. Spares are kept in the barn. They should not require changing, but any problems, let us know.

Games, DVDs and Books

DVDs and books are provided in the bookshelf, some games in the cupboard below.

Wi-Fi

We have Tooway satellite internet. This has a 20mb download speed. When your laptop/tablet searches it will find 2 available networks, TP-Link 2.4Ghz and TP-Link 5Ghz. Both are on our modem. The 2.4 has a slightly longer range, but can suffer if a lot of devices connected, the 5 Ghz not quite so far a range, but better quality. Not all devices can pick up the 5Ghz signal.

The password for each is the same: hettiepippa13

NB. Because of the thickness of the walls, the signal may not reach all the bedrooms or the poolside, but you will get a good signal in the lounge and on the patio, near the door.

Tooway is a capped service, and our download is limited to 40Gb a month. This is more than ample for web browsing, emails etc, but is soon eaten up with video therefore we would ask you not to download films, use YouTube or online gaming. We would also ask that you turn off auto play videos in Facebook, as this seems to eat up our bandwidth.

Equipment Use

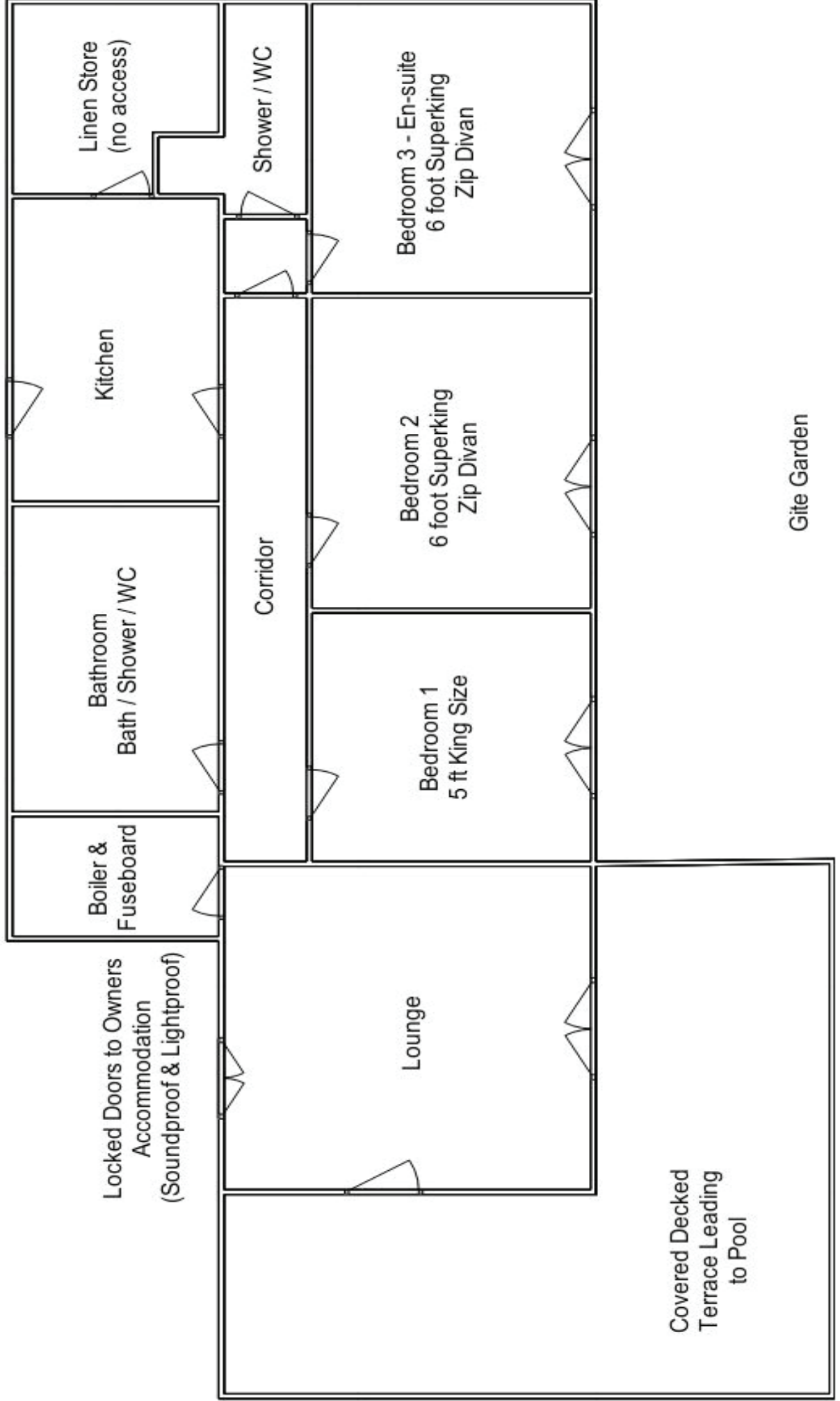
TV, DVD Player.

We have UK Freesat TV offering over 140 channels in English

There are 3 controllers, the Sony one for the DVD, Humax one for the Freesat box and the Toshiba one for the TV. To operate, turn on TV (red button, top left), turn on Humax (button top right) when the Humax logo appears, box is warming up.

To use the DVD, when you turn it on it takes priority and the Sony logo will appear.

Owners Courtyard



Gite Garden

Washing Machine / Dishwasher / Cooker

Abbreviated user instructions are in the kitchen, by the appliances. Full manuals are also available in the kitchen drawer.

Stop Cock

Situated in the boiler room, just behind boiler to your right.

Trip Switch for Electrical Supply

Is in the cupboard in the middle of the wall on the patio. In the rare occasion that it trips, press the grey button back in, and the red button will pop out.

House Fuses

Are in the boiler room on the wall to your left.

Rubbish and Waste

Rubbish is collected from outside our house on a Monday night for landfill, and alternate Tuesday nights for recyclable waste.

For non-recyclable waste, we will collect your black sack on a Monday.

For recyclable waste - Glass, cardboard, tins and plastic containers - please put them in the plastic crate outside the kitchen door. We will sort it and dispose of it.

Septic Tank

Most of rural France use septic tanks to filter waste water and toilet waste.

To keep these working efficiently, there are some basic rules to what can and cannot be put down the system. As friendly bacteria do the work of cleaning the water, no bleach products should be used.

These bacteria cannot process some of the things that are put down mains drainage systems, so as a rule only the 3 P's should go down the toilet – Pee, Paper and Poo!

Anything else can cause problems and cause the toilets to back up, so no sanitary towels, cellulose wipes (such as Wet Wipes) nappies etc. – just the 3 P's!

Swimming Pool

Our pool is 8.2 metres x 4.00 metres x 1.3 metres deep. (27ft x 13ft x 4.3 ft deep).

The pool is the same depth all over.

We will clean the pool each morning prior to your use, vacuuming it, cleaning the skimmer and checking the pool chemistry. Our system uses chlorine to keep the water safe, but the levels are considerably lower than that used in a public pool, and you will not notice any chlorine smell.

The pool area is fenced and there is a pool alarm in situ.

For maximum safety, we would ask you to follow some basic, common sense rules. No diving, or horseplay in the pool area. No glass on the decking area (there are plastic glasses supplied for your use) and children must be supervised at all times.

The patio and pool area are decked. Please wear suitable casual shoes in case of splinters.

Don't forget to bring sunscreen and mosquito repellent. With temperatures often reaching the mid to upper 30s in July and August, make sure you use sunscreen.

We would suggest buying these in the UK as they are considerably cheaper, and with mosquito repellent, would advise buying one based on Deet.

Emergency and Useful Information

Doctor – no appointment necessary, just arrive and wait your turn

Dr POUPEAU Patrice – opposite Le Vieux Porche restaurant

Rue Presbytère, 47350 SEYCHES

05 53 83 88 87

Hours: Monday, Wednesday & Thursday: 8.30am – 10.00am, 2.00 – 4.00pm, 6.00-7.00pm

Friday: 8.30 – 10.00am, 2.00 – 4.00pm

Dentist - (Appointment required)

Dr. HOLLARD Jean-Marc – new health centre behind Gamm Vert Garden Centre

Maison de Santé

rue Henri Caillavet, Miramont de Guyenne

05 53 93 21 22

Both the above doctors speak English. There is a set charge of 23€ consultation fee for both. For the dentist this may also include minor fillings. They will not be interested in your EHIC cards, as all French residents must pay these charges and claim a percentage back from the state. Make sure you obtain receipts and you will get recompense from your insurers or from the DSS in the UK. If you are issued with a prescription, you will be required to pay for the items dispensed. Again, make sure you get a receipt from the Pharmacist. They are used to supplying them.

NB: in the case of Emergency treatment at an A&E unit, they will require your EHIC card.

Hospital

Central hospitalier (Marmande)

Address: 76, rue du Docteur Courret 47207

Phone 1: 05 53 20 30 40

The A&E unit is to the right of the building and marked **Urgences**

Chemists

Pharmacie Wingerter

Place Liberté

47800 Allemans-du-Dropt - 05 53 20 23 44

Pharmacie du Marché – by the roundabout, next to Crédit Agricole bank.

31 Place Martignac

47800 Miramont-de-Guyenne - 05 53 93 20 01

Pharmacie de France – In the centre square, opposite the town hall

pl Hôtel de Ville, 47800 Miramont-de-Guyenne 05 53 93 20 02

The Allemans Pharmacist speaks a little English, the Pharmacist at Pharmacie de France is fluent, and there are a number of English speaking staff at the Pharmacie du Marché

Hairdresser

Sylvie Trillaud - Fluent in English, used to work in London's West End.
No 30, Avenue de Miramont
47800 Allemans-du-Dropt 0553 88 68 35

Railway Station - Gare de Marmande

Place du 11 Novembre Marmande 47200
05 53 20 45 61

Nearest Christian Churches

There are English services at Monteton church every Sunday. (5 miles away)
The services are Anglican and start at 10.30am.
<http://www.churchinaquitaine.org/index.php/monteton#services-events>

Shopping

The nearest supermarkets are in Miramont, 5 miles away. There are a number there, two of which are open on Sunday mornings. The attached map shows their locations.

Opening hours for shops and businesses in France – Remember, many close for 2 hours at lunchtime, from 12.00 – 2.00pm, however the supermarkets stay open over lunchtime.

Lidl: Monday to Saturday 8.30am – 7.30 pm

Netto: Monday to Saturday 8.30am – 7.15pm Sunday 9.00am – 12.15pm

Thurs / Fri / Sat: 9.00 – 12.30, 2.30 – 7.00pm.

Leader Price: Monday to Saturday 8.00am – 7.00pm Sunday 8.00am – 12.00 noon.

Intermarché: Monday to Saturday 8.30am – 7.00pm

Fuel manned hours: 9.15am – 12.00, 3.00 – 7.00pm Monday – Saturday.

Both Netto and Intermarché have petrol stations but please note that only Intermarché has manned hours, they operate their 24/7 service with automated card machines. Although the major supermarket chains claim that they have been updated to accept all cards, a lot of them seem to only accept French bank cards. For safety's sake, fill up during manned hours, where all cards are accepted.

The supermarket filling stations can be up to 15 cents a litre cheaper than ordinary garages.

Nearest Bank - Crédit Agricole, Seyches. (5 miles)

Nearest Butcher – Grocer Allemans du Dropt

Newsagent / confectioner / tobacconist Allemans du Dropt (sells English papers, but are a day old)

ATM Cash Machines

Not found as frequently as in the UK. Most are multi-lingual. The nearest ones are:

Crédit Agricole, Seyches; Crédit Agricole and Banque Populaire, Miramont; Banque Populaire, Duras; Banque Populaire and Crédit Agricole, Eymet. There are also ATM machines in the larger supermarkets – e.g. Intermarché in Miramont (well hidden here! It is on the far right of the store by the televisions)

Larger shops

Marmande, 15 miles away, has a number of large shops situated on the Route de Bordeaux. These include numerous clothes and shoe shops and a Leclerc Hypermarket.



Restaurants

NB: Check opening hours. The French take their main meal at lunchtime and weekends tend to be for families, so a few of these restaurants are actually not open at weekends!

L'Etape Gasconne – Allemans

http://www.tripadvisor.co.uk/Restaurant_Review-g5040805-d3681588-Reviews-L_Etape_Gasconne-Allemans_du_Dropt_Lot_et_Garonne_Aquitaine.html

Le Vieux Porche – Seyches – (closed Friday night and all day Saturday)

http://www.tripadvisor.com/Restaurant_Review-g1238660-d2623246-Reviews-Hotel_Le_Vieux_Porche-Seyches_Lot_et_Garonne_Aquitaine.html

La Terrasse du Chateau de Duras - Duras

http://www.tripadvisor.com/Restaurant_Review-g1079319-d3436020-Reviews-La_Terrasse_du_Chateau_de_Duras-Duras_Lot_et_Garonne_Aquitaine.html

Don Camillo – Duras

http://www.tripadvisor.com/Restaurant_Review-g1079319-d1126164-Reviews-Don_Camillo-Duras_Lot_et_Garonne_Aquitaine.html

Hostellerie des Ducs – Duras

http://www.tripadvisor.com/Restaurant_Review-g1079319-d2282662-Reviews-Hostellerie_des_Ducs-Duras_Lot_et_Garonne_Aquitaine.html

Le Camelia Restaurant – Auriac – (closed Saturday and Sunday)

http://www.tripadvisor.com/Restaurant_Review-g3209008-d3209012-Reviews-Le_Camelia_Restaurant-Auriac_sur_Dropt_Lot_et_Garonne_Aquitaine.html

Les Pieds Sur Terre Restaurant – Eymet

http://www.tripadvisor.com/Restaurant_Review-g662771-d6649287-Reviews-Les_Pieds_Sur_Terre_Restaurant-Eymet_Dordogne_Aquitaine.html

Andine – Eymet

http://www.tripadvisor.com/Restaurant_Review-g662771-d7972490-Reviews-Andine-Eymet_Dordogne_Aquitaine.html

La Cour D'Eymet – Eymet

http://www.tripadvisor.com/Restaurant_Review-g662771-d1141093-Reviews-La_Cour_D_Eymet-Eymet_Dordogne_Aquitaine.html

La Vieux Faitout – Puymiclan (lunchtime only)

http://www.tripadvisor.com/Restaurant_Review-g1573331-d6871864-Reviews-La_Vieux_Faitout-Puymiclan_Lot_et_Garonne_Aquitaine.html

L'Atlantide - Marmande

https://www.tripadvisor.co.uk/Restaurant_Review-g196511-d3667404-Reviews-L_Atlantide-Marmande_Lot_et_Garonne_Nouvelle_Aquitaine.html

La Grange - Marmande

https://www.tripadvisor.co.uk/Restaurant_Review-g196511-d4052888-Reviews-La_grange-Marmande_Lot_et_Garonne_Nouvelle_Aquitaine.html

La Bastide – Eymet

https://www.tripadvisor.co.uk/Restaurant_Review-g662771-d8554326-Reviews-La_Bastide-Eymet_Dordogne_Aquitaine.html

Bistrot du Commerce – Miramont

http://www.tripadvisor.com/Restaurant_Review-g1075549-d3609154-Reviews-Bistrot_du_Commerce-Miramont_de_Guyenne_Lot_et_Garonne_Aquitaine.html

Restaurant Baguettes D’Or - Miramont - Chinese

www.tripadvisor.co.uk/Restaurant_Review-g1075549-d8018908-Reviews-Restaurant_Baguettes_d_Or-Miramont_de_Guyenne_Lot_et_Garonne_Aquitaine.html

D’lices – Beaupuy (Nr. Marmande)

http://www.tripadvisor.com/Restaurant_Review-g6959007-d6957453-Reviews-D_lices-Beaupuy_Haute_Garonne_Midi_Pyrenees.html

Famille Moutier - Thenac (35km)

https://www.tripadvisor.co.uk/Restaurant_Review-g4127782-d3364987-Reviews-Famille_Moutier-Thenac_Dordogne_Aquitaine.html

Local Information

Market Days locally – normally from 8.00am to 12.00 noon.

Most French towns have market days, below is just a few of the more local ones.

Miramont – Monday

Duras – Monday

Marmande – Tuesday, Thursday and Saturday

Eymet – Thursday

Monsegur - Friday

Issigeac – Sunday, a bit further away (25 miles) but in the summer is enormous, very busy and well worth a visit.